

## **Job Vacancy: Neighbourhood Green Spaces Ranger**

### **Pulborough Parish Council**

Swan View, Lower Street, Pulborough, West Sussex RH20 2BF

[www.pulboroughparishcouncil.gov.uk](http://www.pulboroughparishcouncil.gov.uk)

---

### **Neighbourhood Green Spaces Ranger**

Pulborough Parish Council is seeking a dedicated and enthusiastic individual to join our team as a **Neighbourhood Green Spaces Ranger**. This is an exciting opportunity to combine practical grounds maintenance with initiatives to enhance and protect local biodiversity.

- **Location:** Pulborough, West Sussex
- **Hours:** 22.5 hours per week, midweek
- **Salary:** SCP Grade 7, £26,403 Full Time Equivalent, 22.5 hours per week at £13.69
- **Benefits:** Local Government Pension Scheme (LGPS)
- **Reports to:** Deputy Clerk

### **About the Role**

#### **Purpose:**

Pulborough Parish Council is seeking a motivated and enthusiastic Neighbourhood Green Spaces Ranger to care for and enhance the parish's open spaces. This part-time role combines practical grounds maintenance, such as planting, tree work, litter picking, play area inspections and minor repairs, with biodiversity and environmental improvement projects. The ideal candidate will have experience in grounds maintenance or horticulture, a strong interest in biodiversity, and the ability to work independently.

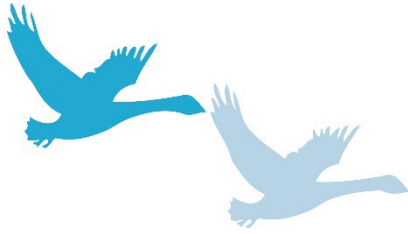
### **Key Responsibilities:**

#### **Grounds Maintenance:**

- Care for and maintain seven key open spaces within Pulborough, ensuring they are safe, welcoming and well-presented.
- Tasks include tree work, strimming, grass cutting, litter collection, planting, play park inspections and repairs to equipment and infrastructure.

#### **Biodiversity Initiatives:**

- Develop and implement biodiversity projects to enhance the natural environment.



- Monitor and report on the ecological health of the parish's green spaces.

## Person Specification

### Skills and Experience:

- Previous experience in grounds maintenance, horticulture or a related field is critical.
- A passion for biodiversity and environmental sustainability.
- Knowledge of plants, wildlife and habitats is an advantage.

### Personal Attributes:

- Self-motivated, organised and able to work independently.
- A practical and proactive approach to problem-solving.

### Requirements:

- A valid driving licence.
- Flexibility to work occasional weekends or evenings for community events or urgent tasks.

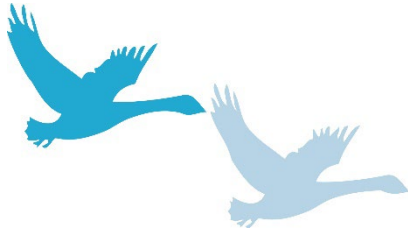
## About Us

Pulborough Parish Council is dedicated to representing the best interests of our residents, improving quality of life, and enabling a vibrant, flourishing community. We are committed to good governance, community engagement, and continuous improvement. The Council manages several assets such as playgrounds, recreation grounds, games areas, allotments and nature reserves.

Pulborough is a historic village in West Sussex, home to around 5,000 residents. Renowned for its rich Roman and Saxon heritage, Pulborough sits at the meeting point of the A29 and A283 roads and enjoys a picturesque setting on the banks of the River Arun. The village is also ideally positioned on the edge of the South Downs National Park, making it a gateway to stunning countryside and local history.

## Our Values

- **Equality:** Everyone is of equal value and should be respected according to individual needs and abilities.
- **Equity:** We are fair, reasonable, and just in all activities.
- **Empowerment:** We help individuals take responsibility and participate in decision-making.
- **Accessibility:** We ensure equal access for all in employment and service delivery.
- **Quality:** We strive for the highest standards in service delivery.



## **Employee Benefits**

- Competitive salary in line with NJC pay scales
  - Membership of the Local Government Pension Scheme (LGPS)
  - Generous annual leave entitlement
  - Family-friendly policies (maternity, paternity, adoption, parental leave)
  - Flexible and hybrid working arrangements (where possible)
  - Commitment to training, development, and career progression
  - Supportive, inclusive, and respectful working environment
- 

## **How to Apply**

Please send your CV and covering letter to [Clerk@pulboroughparishcouncil.gov.uk](mailto:Clerk@pulboroughparishcouncil.gov.uk)

Or

Return your completed CV and covering letter to:

The Clerk to the Council

Pulborough Parish Council

Swan View, Lower Street, Pulborough, West Sussex RH20 2BF

**Closing date:** 17<sup>th</sup> May 2026

Pulborough Parish Council is committed to equal opportunities and welcomes applications from all sections of the community. For an informal discussion about the role, please contact the Clerk at the details above.