

# Pulborough Parish Council

Swan View, Lower Street, Pulborough, West Sussex RH20 2BF

Telephone: 01798 873532

Email: [Reception@pulboroughparishcouncil.gov.uk](mailto:Reception@pulboroughparishcouncil.gov.uk)

[www.pulboroughparishcouncil.gov.uk](http://www.pulboroughparishcouncil.gov.uk)

*for Pulborough's future*

## Winter Maintenance Plan

### West Sussex County Council Highways – winter gritting

Responsibility for salting and gritting both the roads and pavements rests with West Sussex County Council. The Highway's gritting lorries work around the clock to keep the main transport links open treating 1,600km of the county's roads as part of their precautionary salting network. West Sussex County Council **are not able to undertake any of the following:**

- Hand treat footways / cycle ways or precincts
- Treat private, third party or non-highway land.
- Refill salt bins / replace Hippo Bags when stocks are critical

### Gritting Routes:

Using their interactive map, you can view a map of their permanent gritting routes, coloured by priority. Please note: The system only provides information about whether a road is on a gritting route and does not tell you whether the roads will be or have been gritted.

You can see if their gritters will be in operation by following them on Twitter via the "How We Decide When to Grit Roads" page.

Read more at [West Sussex County Council's Road Winter Maintenance](#).

### Grit bins

Grit bins are provided by West Sussex County Council; to support the local community the Council provides 25 grit bins in strategic locations around the town which are filled by the County Council annually before the start of winter.

**Grit bins are provided at various locations throughout the town to allow drivers and pedestrians to treat localised icy conditions. The bins contain a salt/sand mix which is solely for use on public roads and pavements and should not be used for private driveways.**

### Gritting

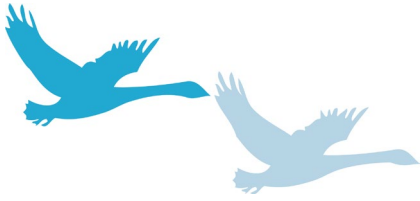
- You do not need to carpet an area with grit to achieve the desired effect. 'Dusting' the grit sparingly from a shovel will achieve the same effect.
- The salt should be used sparingly as a little goes a long way.
- Remember if you use all the grit in one area, others will be without

### Report an empty or damaged grit bin

West Sussex County Council will not refill empty bins and the Parish Council are only able to assist if stocks allow.

The Council have a program of works to replace damaged or broken grit bins however, if a grit bin near you becomes empty or damaged, let us know online.

If you would like to report that a grit bin is empty or damaged – please email [reception@pulboroughparishcouncil.gov.uk](mailto:reception@pulboroughparishcouncil.gov.uk).



# Pulborough Parish Council

Swan View, Lower Street, Pulborough, West Sussex RH20 2BF

Telephone: 01798 873532

Email: [Reception@pulboroughparishcouncil.gov.uk](mailto:Reception@pulboroughparishcouncil.gov.uk)

[www.pulboroughparishcouncil.gov.uk](http://www.pulboroughparishcouncil.gov.uk)

*for Pulborough's future*

## **Response times**

Please appreciate that it may take a few days to get to the bins as resources will be stretched and unless WSCC offer more supplies it will be a partial refill only.

The Parish Council have no ability to deliver to areas where there are no grit bins.

## **New bin requests**

The Parish Council is not able to provide any additional grit bins, and there is no waiting list.

## **Pulborough Parish Council – Winter Gritting**

The aim of the Parish Council's Winter Management Plan is on maintaining access to key facilities around the centre. This includes access to the Parish Council and S&SC.

## **Gritting routes**

The Parish Council has one groundmen; these resources do not allow the Parish Council to attend any areas that haven't been previously agreed. In the event of concerns as to safety on the roads or pavements we must refer you back to the Highways Authority West Sussex CC.

## **Supporting your neighbours**

Severe weather conditions can be life threatening, especially to those who are less likely to be able to look out for themselves. During these times, you can help your more vulnerable neighbours by calling in on them to check that they are warm, well and have sufficient food supplies.