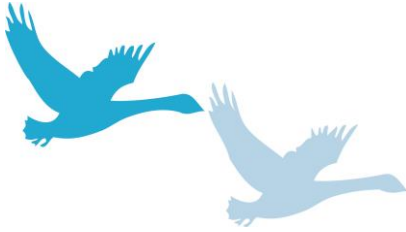


PULBOROUGH PARISH COUNCIL

Working together for a better future



PULBOROUGH PARISH COUNCIL
Swan View, Lower Street
Pulborough
West Sussex RH20 2BF
Telephone: 01798 873532
Email: clerk@pulboroughparishcouncil.gov.uk

MINUTES OF THE PLANNING AND SERVICES COMMITTEE MEETING 21st FEBRUARY 2019 AT THE VILLAGE HALL

PRESENT: Cllrs Wallace (Vice Chairman), C Esdaile, Henly, Lawson, Kay (from part way Min 131) and Trembling

IN ATTENDANCE: Mrs H Knight (Clerk)

The meeting opened at 7.16pm

128. APOLOGIES FOR ABSENCE

Apologies had been received and were approved from Cllrs. Tilbrook (ill health) and Kipp (personal commitment).

129. DECLARATIONS OF INTEREST AND CHANGES TO REGISTER OF INTERESTS

None were made.

130. ADJOURNMENT FOR PUBLIC SPEAKING

There were no public present.

131. PLANNING APPLICATIONS

The Committee considered the planning applications, attached to these Minutes as Appendix 1, and **RESOLVED** that its representations be forwarded to the District Council.

The meeting closed at 7.24pm

.....Chairman

.....Date

**Recommendations of the Planning & Services Committee meeting held on
Thursday 21st February 2019**

DC/19/0191 – Glebe Barn Old Rectory Lane Pulborough

Erection of a single storey rear extension and conversion of garage into habitable living space. **No objection.**

DC/19/0209 – Mare Meadow West Mare Lane Pulborough

Change of use of existing building from ancillary accommodation to residential dwelling. **Objection: Due to highway access and parking concerns. The Council supports previous comment by a Planning Inspector relating to Application PL/28/95 regarding access issues between Batts Lane and the A283, who stated"the present access is so poor as to be unacceptable for one more house".**

Trees

DC/19/0245 – Old Rectory Old Rectory Lane Pulborough

Fell 1 x Loquat (*Eriobotrya japonica*) Work to tree in a Conservation Area. **No objection.**

DC/19/0258 – Glebe Barn Old Rectory Lane Pulborough

Surgery 1 x Strawberry Tree, 1 x Magnolia Grandiflora, 1 x Red Horse Chestnut, 2 x Beech. Work to trees in Conservation Area. **No objection.**