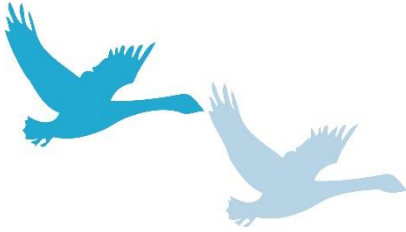


PULBOROUGH PARISH COUNCIL

Working together for a better future



PULBOROUGH PARISH COUNCIL
Swan View, Lower Street
Pulborough
West Sussex RH20 2BF
Telephone: 01798 873532
Email: clerk@pulboroughparishcouncil.gov.uk

MINUTES OF THE PLANNING AND SERVICES COMMITTEE MEETING HELD ON 24TH NOVEMBER 2022 AT THE VILLAGE HALL

PRESENT: Cllrs Hare (Chairman), Davies, Esdaile, Henly, Kay, and Lawson.

IN ATTENDANCE: N Wiltshire (Deputy Clerk)

The meeting opened at 7.17pm

72. APPOINTMENT OF MEETING CHAIRMAN

In the absence of both the Chairman and the Vice-Chairman, it was **RESOLVED** to appoint Cllr Hare as Chairman of this meeting.

73. APOLOGIES FOR ABSENCE

Apologies for absence were received and reason approved from Cllrs Kipp (personal commitment), Ellis-Brown (personal commitment), Hunt (personal commitment) and Trembling (personal commitment).

74. DECLARATIONS OF INTEREST AND CHANGES TO REGISTER OF INTERESTS

Cllr Lawson declared an interest in agenda item 4, Planning Application DC/22/1899 – Kilbrannan Farm Gay Street Pulborough West Sussex RH20 2HJ – as she is part of the farming fraternity.

There were no changes to the register of interests.

75. ADJOURNMENT FOR PUBLIC SPEAKING

There were no public speakers.

76. PLANNING APPLICATIONS

The Committee considered the planning applications, attached to these Minutes as Appendix 1, and **RESOLVED** that its representations be forwarded to the District Council.

The meeting closed at 7.35pm

.....Chairman

.....Date

Appendix 1

**Recommendations of the Planning & Services Committee meeting held on
Thursday 24th November 2022**

DC/22/1899 - Kilbrannan Farm Gay Street Pulborough West Sussex RH20 2HJ

Construction of a sand school.

No objection, however, this was on the basis that the proposed materials and finishes, i.e., a wax fibre mix surface, are used.

DC/22/1906 - Beaglejack Barn Blackgate Lane Pulborough West Sussex RH20 1DD

Erection of a single storey link extension and a detached single storey garage and store building.

No objection.

DC/22/1932 - North Heath House Stane Street North Heath Pulborough West Sussex RH20 1DN

Erection of a two-storey link extension, a single storey rear extension and associated alterations.

Objection on the grounds of overdevelopment.

Trees

DC/22/1886 - Garden View The Street Nutbourne Pulborough West Sussex RH20 2HE

Surgery to 1x Ash Tree (Works to Trees in a Conservation Area)

No objection.

DC/22/2000 - 30 Masons Way Codmore Hill Pulborough West Sussex RH20 1DZ

Surgery to 7x Poplar.

No objection.

DC/22/2088 - 32 Masons Way Codmore Hill Pulborough West Sussex RH20 1DZ

Surgery to 1x Oak.

No objection.