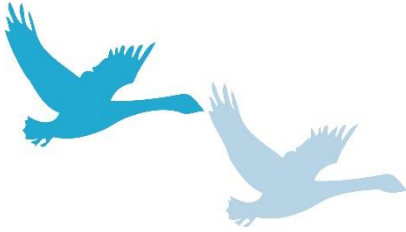


PULBOROUGH PARISH COUNCIL

Working together for a better future



PULBOROUGH PARISH COUNCIL
Swan View, Lower Street
Pulborough
West Sussex RH20 2BF
Telephone: 01798 873532
Email: clerk@pulboroughparishcouncil.gov.uk

MINUTES OF THE PLANNING AND SERVICES COMMITTEE MEETING HELD ONLINE USING MICROSOFT TEAMS ON 18TH FEBRUARY 2021

The Local Authorities and Police and Crime Panels (Coronavirus) (Flexibility of Local Authority and Police and Crime Panel Meetings (England and Wales) regulations 2020 (“the Regulations”) came into force on 4th April 2020. The Regulations enable local councils to hold remote meetings (including by video and telephone conferencing) for a specified period until 7th May 2021.

PRESENT: Cllrs Kipp (Vice Chairman), Hare, Henly, Hunt, Lawson and Trembling (from part of Min.217)

IN ATTENDANCE: Mrs H Knight (Clerk)

The meeting opened at 7.15pm

Due to the sad news that Cllr C Esdaile, Chairman of the Committee, had passed away, Cllr Kipp, as the Vice Chairman, took the meeting.

214. APOLOGIES FOR ABSENCE

Apologies were noted from Cllr J Esdaile (personal reasons). Cllr Kay was unable to access the meeting due to technical difficulties. Cllr Trembling joined the meeting late due to technical issues.

215. DECLARATIONS OF INTEREST AND CHANGES TO REGISTER OF INTERESTS

None made.

216. ADJOURNMENT FOR PUBLIC SPEAKING

There were no public present.

217. PLANNING APPLICATIONS

The Committee considered the planning applications, attached to these Minutes as Appendix 1, and **RESOLVED** that its representations be forwarded to the District Council.

The meeting closed at 7.32pm

.....Chairman

.....Date

**Recommendations of the Planning & Services Committee meeting held on
Thursday 18th February 2021**

DC/20/2595 – 11 The Spinney, Pulborough, West Sussex RH20 2AP

Retrospective application for a single storey side extension to existing outbuilding. Internal modifications to make the utility and bathroom areas larger.

Objection: The Parish Council note a neighbour's comments raising concerns about infringement of a party wall. Councillors have concerns regarding a potential a boundary/party wall issue.

Trees

DC/21/0237 – Little Croft, Rectory Lane, Pulborough, West Sussex

Surgery to 2 x Yew and 1 x Field Maple (Works to Trees in a Conservation Area).

No objection.

DC/21/0241 – Barton Place, The Street, Nutbourne, Pulborough

Fell 18 x Leylandii (Works to Trees in a Conservation Area).

No objection.

DC/21/0315 – Laurel Cottage, Station Road, Pulborough, West Sussex

Surgery to 1 x Laurel hedge (Works to Trees in a Conservation Area).

No objection.