

Pulborough Parish Council

Swan View, Lower Street, Pulborough, West Sussex RH20 2BF
Telephone: 01798 873532
Email: Reception@pulboroughparishcouncil.gov.uk
www.pulboroughparishcouncil.gov.uk

for Pulborough's future

Pulborough Parish Council Resilience Plan

DIAL 999 IN ANY EMERGENCY SITUATION

101 if not urgent

Call those below to get local support.

Pulborough Parish Council and other involved local bodies are committed to delivering this plan for the benefit of residents in the Parish. However, it should be noted that this support will be delivered by local volunteers who will endeavour, subject to their skills and availabilities, take all reasonable measures to achieve the plan objectives. During a major, wide area incident, it could be some time before responding agencies are able to offer assistance and by planning in advance, the Parish Council will provide key assistance coordinating local response activities. Any emergency reported should give a detailed note of the emergency and any request for immediate assistance. Include exact location, type of incident, any hazards, access issues and any casualties. Make a note of the name, address, and direct telephone number of the caller.

Plan Overview

The Resilience & Emergency Plan helps Pulborough prepare for and respond to local emergencies. It outlines risks, identifies local resources, and complements the response of emergency services. Support is delivered by volunteers and may be limited during widespread incidents.

Quick Reference: Emergency Contacts

999 – Life-threatening emergency

101 – Police (non-emergency)

Crimestoppers (anonymous): 0800 555 111

Pulborough Parish Council Office: 01798 873532

Community Wardens: Lottie Torp 07584 337476 / Carol Boniface 07584 337475

Emergency Duty Councillor (if appointed): TBC

UK Power Networks (electricity): 0800 316 3105

British Gas Emergency: 0800 111 999

Southern Water: 0330 303 0368

Flood line: 0345 988 1188

RSPCA: 0300 1234 999

Network Rail Emergency: 03457 11 41 41

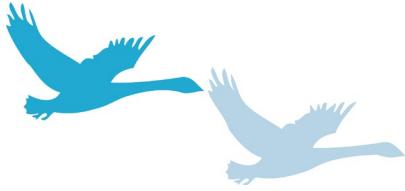
Defibrillator Locations

Pulborough Village Hall RH20 2BF – 24/7

United Reformed Church RH20 2DW – 24/7

St Mary's Church RH20 1AF – 24/7

Adopted 11th May 2026



Pulborough Parish Council

Swan View, Lower Street, Pulborough, West Sussex RH20 2BF
Telephone: 01798 873532
Email: Reception@pulboroughparishcouncil.gov.uk
www.pulboroughparishcouncil.gov.uk

for Pulborough's future

Sports & Social Club RH20 2AJ – 24/7
Pulborough Station RH20 1AH – 24/7
Pulborough Medical Centre RH20 1FG – 24/7
Tesco RH20 1FG – store hours
Sainsbury's RH20 1BQ – 24/7
The Rising Sun, Nutbourne RH20 2HE – 24/7 (entrance)
Lower Street outside Royal Mail – RH20 2AY
Brinsbury College – RH20 1DJ

Objectives

- Enable the community to respond effectively to emergencies.
- Identify local resources, premises, and transport options.
- Support vulnerable residents.
- Mitigate risks where possible.
- Maintain and update the plan regularly.

Emergency Scenarios

Crime & Anti-Social Behaviour

- Dial 999 in an emergency, 101 if not urgent.
- Report anonymously to Crimestoppers (0800 555 111).
- Contact Community Wardens.
- Do not intervene directly.

Medical Emergency

- Dial 999 for ambulance/paramedic.
- If trained, apply CPR and use nearest defibrillator.
- Ensure airway clear; use lighter compressions for children.

Fire / Gas Leak

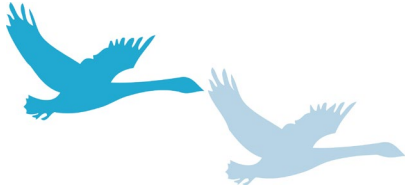
- Dial 999 – state location and what is burning/leaking.
- Evacuate if unsafe; avoid naked flames near gas.
- Fit smoke alarms and keep electrical systems safe.

Flooding

- Check on vulnerable neighbours.
- Move family, pets, and valuables to safety.
- Turn off gas/electricity if safe.
- Listen to emergency services; evacuate if told.
- Avoid driving/walking through flood water.

Severe Weather

- Avoid travel in high winds, snow or ice unless essential.
- Use winter tyres in cold months; carry torch, food, warm clothes.
- Stay indoors during storms; beware falling debris.



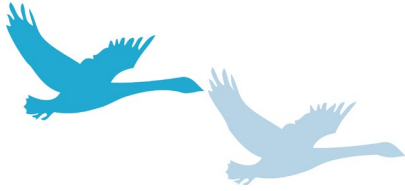
Pulborough Parish Council

Swan View, Lower Street, Pulborough, West Sussex RH20 2BF
 Telephone: 01798 873532
 Email: Reception@pulboroughparishcouncil.gov.uk
 www.pulboroughparishcouncil.gov.uk

for Pulborough's future

During heatwaves: stay hydrated, keep homes cool.

EMERGENCY	ACTION -WHAT TO DO	ADVICE
Criminal behaviour	Dial 999 give location or Crimestoppers Anonymously 0800 555111	Do not get involved. For non-emergency Police dial 101 Call the local Wardens. 07584 337476 or 07584 337475
Anti-Social behaviour. Domestic Abuse	Call the local Wardens and Police email: pulborough.wardens@horsham.gov.uk Horsham District Council e-mail communitysafety@horsham.gov.uk	Try to get evidence on Registration Number and description of the person or people Fly tippers etc.
Incidents on a Train or at a Station	Call British Transport Police 0800 40 50 40 Text 61016	
Medical emergencies	Dial 999 for an Ambulance or Paramedic. Hail assistance to get a Defibrillator if possible. Follow instructions on the Defibrillator Defibrillator locations; see map below	If competent apply Cardio Pulmonary Resuscitation CPR .
Drowning	Dial 999	If competent; rescue and apply CPR
Human Health Pandemics, Covid Flu., etc.	Publish advice from the NHS about methods used to stop the spread.	Wear a mask in public places, especially hospitals and health centres. Sterilise hands at every opportunity
Human Health Home maintenance	Contact Horsham District Council, Environmental Health or Pulborough Parish Neighbourhood Wardens for advice on Asbestos and Mould; it's checking, testing, removal and disposal.	Have material tested by calling an expert. Wear appropriate PPE to protect lungs from dust, ears from noise when working on your house.
Asbestos	Asbestos is a commonly used material in floor tiles, ceiling finishes Artex etc , up to 1999 .	
Mould	Mould gives off spores effecting health due to exposure include:- Allergy and respiratory symptoms such as nasal congestion, wheezing, watery or itchy eyes, coughing, and respiratory infections. Worsening of asthma and allergic conditions. Rarely, severe mould infections, usually in the lungs. Stuffy nose, sore throat, skin irritation, and coughing. For immune-compromised people, infections in the lungs. Moulds can produce allergens, irritants, and potentially toxic substances.	Use an Air Purifier with good filtration. Treat mould with an antifungal wash or spray. Contact professional
Smoke	Smoke from house fires and bonfires can be poisonous, carcinogenic and harmful to human	Do not burn Treated or painted timber Yew logs.

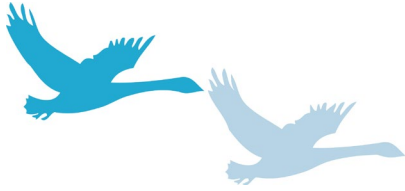


Pulborough Parish Council

Swan View, Lower Street, Pulborough, West Sussex RH20 2BF
 Telephone: 01798 873532
 Email: Reception@pulboroughparishcouncil.gov.uk
 www.pulboroughparishcouncil.gov.uk

for Pulborough's future

Air Quality	health. Smoke pollutes a wide area and spoils clothes drying outside. Report offenders to Wardens & WSCC	
	Indoor air quality. This can be harmful to health due to cooking by gas, use of various household chemicals and wood burning stoves etc.	Fit an electric air purifier that filters the air of VOCs, Particulate matter, Formaldehyde etc.
Noise	Noise This can cause unnecessary conflict with neighbours as well as hearing loss.	Wear protective ear defenders and be considerate.
Dog Mess	Dog Mess Report Offenders to Wardens & Horsham District Council	Request that all dog owners clear up after their dog. I should never be left on farmland as it is a major cause of disease and should be picked up wherever it occurs.
Cooking by Gas and Electricity	Cooking by gas causes toxic air pollution Nitrogen Dioxide and Particulate Matter 2.5.	Ensure an extractor fan is used. Use an Air Purifier. Open Windows.
Fly tipping	Fly tipping, Report to Wardens & Horsham District Council	Location, Time and Date. The vehicle's number plate, description of the vehicle Any phone numbers on the vehicle, type of rubbish being dumped.
Fire	Dial 999 Give location of fire. Explain what is burning. House; report known occupants. Office, Warehouse, Shop etc. Vehicle. Keep away.	Many house fires are cause by electrical faults. Ensure 13amp sockets are turned off where possible and not at the device. Always use a qualified Electrician. Fit heat & smoke sensors. Fit Arc Fault Detection Devices. Evacuate to the Village Hall for shelter.
Gas leakage Air Pollution.	0800 111 999 British Gas	Gas is usually detected by smell Contact gas company straight away.

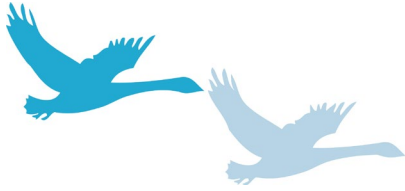


Pulborough Parish Council

Swan View, Lower Street, Pulborough, West Sussex RH20 2BF
 Telephone: 01798 873532
 Email: Reception@pulboroughparishcouncil.gov.uk
 www.pulboroughparishcouncil.gov.uk

for Pulborough's future

<p>ROAD PROBLEMS Accidents, Fallen Trees etc., blocking the road.</p> <p>Chemical spills,</p> <p>Traffic jams etc.</p>	<p>Dial 999 for accidents. Dial 01243 642105 WSCC Highway Emergency for fallen trees, floods, potholes etc.</p> <p>Dial 0330 303 0368 Southern Water for leaking pipes and blocked drains, sewage etc.</p> <p>Where traffic is held up, high air pollution, especially Nitrous Oxide and Particulate Matter occur and this causes many lung problems killing 28 to 36,000 people in UK every year.</p>	<p>Be careful of fire and explosion from leaking fuel on overturned cars . Do not move injured people as this can cause more problems.</p> <p>Do not touch</p> <p><u>In a car</u>; at the first sign of traffic congestion switch the heating or air conditioning air intake to recirculation. Switch off engine if waiting. <u>Walking, Cycling or Scootering</u>; Wear a good mask of N95, FFP2 or FFP3 standard.</p>
<p>Flooded Roads (Driving)</p> <p>Icy Snow Covered Roads</p>	<p>Dial 01243 642105 WSCC Highway Emergency Report to Floodline 0345 988 1188 Get phone alerts by registering with Floodline</p> <p>Do not travel unless your vehicle has Winter or All Season Tyres.</p>	<p>Get weather forecast and do not drive through deep floodwater. If shallow drive through slowly in low gear at high engine revolutions.</p> <p>Do not drive on snowbound icy roads unless “all season” or “winter” tyres” are fitted.</p>
<p>Domestic animals hit on road</p> <p>Wild Animals hit on road</p> <p>Farm animals hit on road</p>	<p>Call Owner or local Wardens or 999.</p> <p>Call RSPCA 0300 1234 999</p> <p>Call 101 and Farmer</p>	<p>If safe check for ID tag. Dogs - must be reported to Police Cats - no need to report Deer - Police if it’s still alive. Other wildlife, no need to report</p>
<p>Cycling</p>	<p>Observe the Highway Code</p>	<p>Ensure front and rear lights work well and wear hi-visibility clothing and a crash helmet</p>
<p>Walking in the dark on a pavement or road</p>	<p>Wear High Visibility clothing</p>	<p>Wear High Visibility Arm Bands/ Jacket and walk facing the traffic and use a torch.</p>
<p>Pavement obstructions & verges</p>	<p>Report to WSCC 01243 642105</p>	<p>www.westsussex.gov.uk</p>
<p>Footpaths overgrown or blocked with</p>	<p>Report to WSCC 01243 777100</p>	<p>www.westsussex.gov.uk</p>

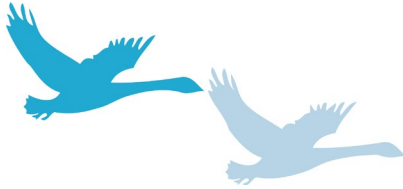


Pulborough Parish Council

Swan View, Lower Street, Pulborough, West Sussex RH20 2BF
 Telephone: 01798 873532
 Email: Reception@pulboroughparishcouncil.gov.uk
 www.pulboroughparishcouncil.gov.uk

for Pulborough's future

<p>unsafe styles, bridges, fallen trees, damaged signs.</p>		
<p>Train Crash</p>	<p>Dial 999 Give location. Call Network Rail 03457 11 41 41</p>	<p>Keep away as the rail may be live. Wait Police, Fire Brigade & Ambulance Identify alternative methods of transport for stranded passengers or evacuate to the Village Hall for shelter.</p>
<p>Train line obstructed by vehicle, tree etc.</p>	<p>Call 999 Network Rail 03457 11 41 41 Give location.</p>	<p>Do not go near the track as rails maybe still live.</p>
<p>Flooded Housing</p>	<p>Call the Insurance Company Check if older residents need help</p>	<p>See map below of houses near high water. Advise residents in risk areas to have a toilet 'panseal' ready to stop sewage backflow in downstairs toilets. Move your family and pets to a safe place. Businesses should inform staff and customers, ensure that they can get to safety and move stock to a safe place. Move cars and other vehicles to higher ground, if it is safe to do so. Use flood protection equipment, such as flood barriers, air brick covers and pumps to protect your property. Any equipment should be professionally supplied and installed to help reduce the impact of flood water. Move important items upstairs or to a safe place in your property, starting with cherished items of personal value that you will not be able to replace. Move valuables, movable furniture and furnishings. You may need to leave your property, so pack a bag with enough items for a few nights away. Include essential items including a torch with spare batteries, mobile phone and charger, warm clothes, home insurance information, water, food, first aid kit and any prescription medicines or baby care items you may need.</p>

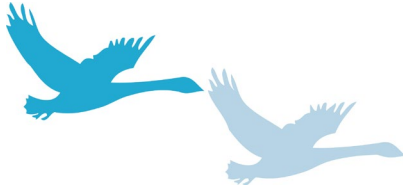


Pulborough Parish Council

Swan View, Lower Street, Pulborough, West Sussex RH20 2BF
 Telephone: 01798 873532
 Email: Reception@pulboroughparishcouncil.gov.uk
 www.pulboroughparishcouncil.gov.uk

for Pulborough's future

		<p>Turn off gas, electricity and water mains supply before flood water starts to enter your property. Never touch an electrical switch if you are standing in water.</p> <p>If it is safe to do so, make sure neighbours are aware of the situation and offer help to anyone who may need it.</p> <p>Listen to the advice of the emergency services and be ready to evacuate your property if told to do so. Most evacuation centres will let you bring your pets.</p> <p>Avoid walking, cycling or driving through flood water. 30 cm/12" of flowing water can move a car and 6 inches can knock an adult off their feet. Flood water is dangerous and may be polluted. Wash your hands thoroughly if you've been in contact with it. Evacuate to the Village Hall for shelter.</p>
Electricity supply	<p>Call 0800 316 3105 or 0333 323 2105 UK Power Networks 0800 029 4285 Give location of affected area.</p>	Check people at risk.
Water supply	<p>Call Southern Water 0330 303 0368 Give location of affected area.</p>	Get water for older vulnerable residents
Animal Welfare Farm & Domestic	<p>Call 0300 1234999 01243 773359 , 07395 792891 RSPCA Give location Cattle Foot & Mouth</p> <p>Dogs Alabama Rot Contact RSPCA https://www.rspca.org.uk/adviceandwelfare/diseases</p> <p>Chicken Report dead wild birds to DEFRA 03459 33 55 77 apha@notifications.service.gov.uk></p>	<p>Call the farmer if known for livestock concerns. Do not walk on farm footpaths where Foot & Mouth is prevalent.</p> <p>Do not walk dogs if Alabama Rot is in your area. Wash dogs feet after walking</p> <p>Register Chicken holdings with DEFRA .Cover chicken runs to prevent contact with wild birds</p>
Invasive foreign plants animals, dead wild birds etc	<p>Call 03708 506506 Enviro Agency enquiries@environmental-agency.gov.uk or 0300 0200 301 APHA nnsi@apha.gov.uk</p>	<p>E.g. Japanese Knotweed Himalayan Balsam Asian Hornets etc. Dead Birds and Chicken</p>

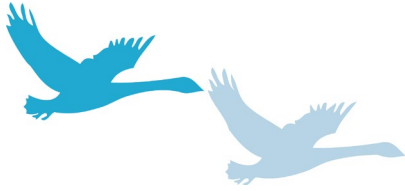


Pulborough Parish Council

Swan View, Lower Street, Pulborough, West Sussex RH20 2BF
 Telephone: 01798 873532
 Email: Reception@pulboroughparishcouncil.gov.uk
 www.pulboroughparishcouncil.gov.uk

for Pulborough's future

<p>Severe weather Storms, high wind speeds, heavy rain or snow</p>	<p>Don't travel</p>	<p>Stay indoors if possible. If travel cannot be avoided drive with great care avoid floods. Ensure car is well prepared lights, washer fluid etc.</p>
<p>Severe Cold weather</p>	<p>Before Winter Call 0800 0385737 Warmer Homes for an insulation survey to determine:- 1. The current Energy Performance Certificate (EPC) of the property. 2. Assess which measures, including those requested are feasible on your property and affordable with the funding available 3. The outcome of the installation will improve the EPC rating of the property. View full warnings and advice at: Met Office Cold-Health Alert platform NHS Keep Warm Keep Well WSCC Dealing with extreme weather WSCC Preparing for emergencies WSCC Report a road and footway Issue</p>	<p>Stay tuned in to weather forecasts. Check room temperatures. Maintain at least 18C. Keep warm and active. Wear good insulating clothes indoors and out. If you have to go out wear warm boots with non slip shoes. If you are concerned about your own welfare or that of others please alert the emergency services. House Insulation is key to a warm house and reduces energy costs. Outside water taps etc; Ensure these are insulated and have a turn off valve fitted indoors. When turned off indoor open outside tap to drain water then reclose it.</p>
<p>Severe hot weather</p>		<p>To keep your house cool in summer, consider the following:- Use Fans: Place to improve airflow; ceiling fans should rotate counterclockwise to push cool air down. Block Sunlight: Use shades, blinds, or blackout curtains to prevent sunlight from heating your home. Ventilation: Keep windows closed during the day and open them at night to allow cooler air in. LED Lighting: Switch to LED bulbs, which emit less heat compared to traditional bulbs. Insulation: Consider adding window films or reflective blinds to reduce heat gain. Cavity wall insulation can keep your home warmer in the winter and cooler in the summer.</p>
<p>Climate Change</p>	<p>Follow National Guidelines</p>	<p>Insulate your house. Replace Gas with Electric Cooking, and heating.</p>



Pulborough Parish Council

Swan View, Lower Street, Pulborough, West Sussex RH20 2BF

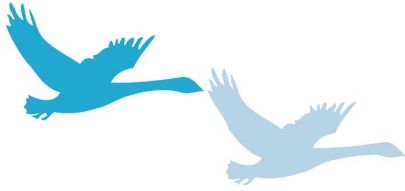
Telephone: 01798 873532

Email: Reception@pulboroughparishcouncil.gov.uk

www.pulboroughparishcouncil.gov.uk

for Pulborough's future

		<p>Fit Solar Panels. Buy a Fully Electric Car. Reduce travel where possible and use Public Transport.</p>
--	--	--

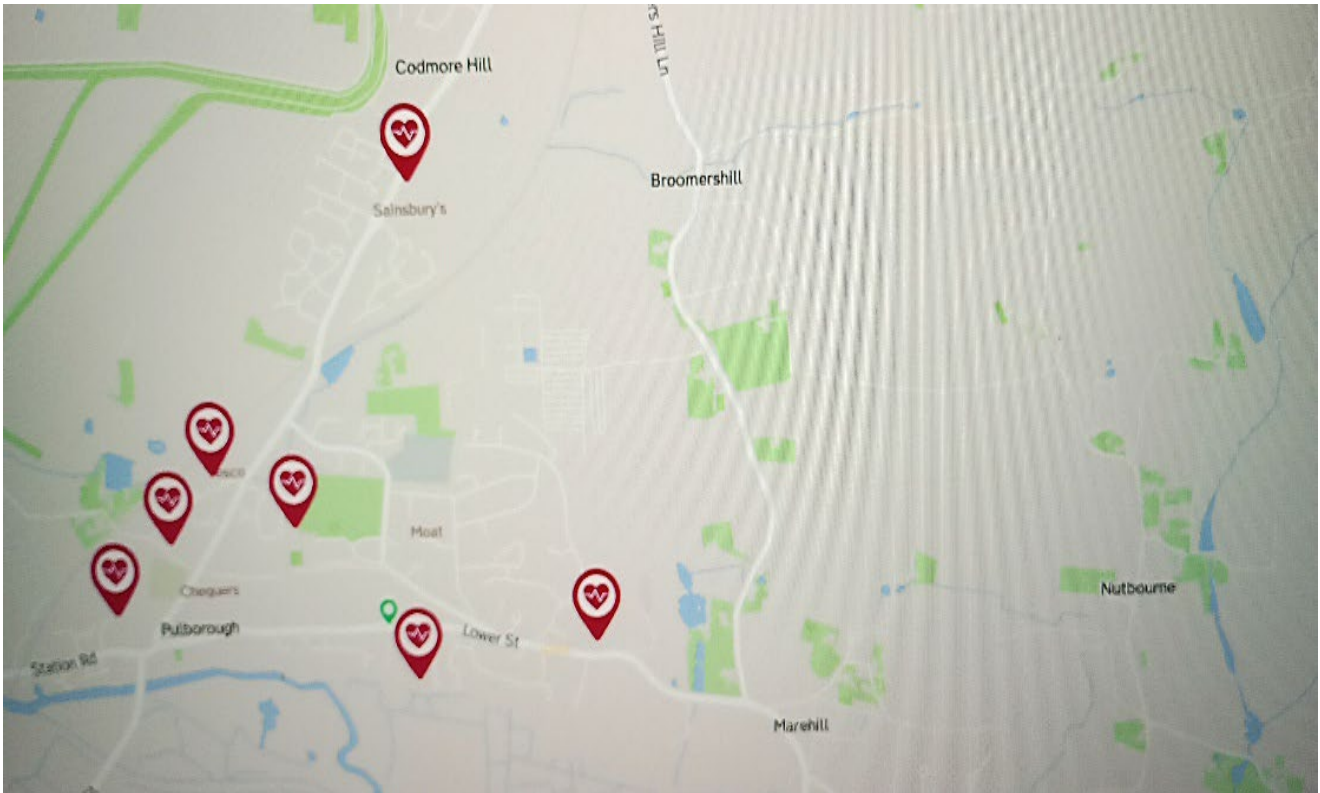


Pulborough Parish Council

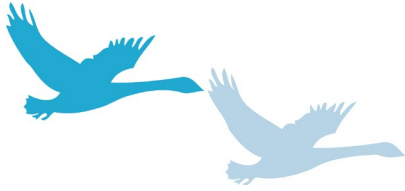
Swan View, Lower Street, Pulborough, West Sussex RH20 2BF
Telephone: 01798 873532
Email: Reception@pulboroughparishcouncil.gov.uk
www.pulboroughparishcouncil.gov.uk

for Pulborough's future

Defibrillator Locations in Pulborough



- Pulborough Village Hall RH20 2BF Available 24/7 Public
- United Reformed Church RH20 2DW Available 24/7 Public
- St Mary's Church RH20 1AF–Available 24/7Public
- Pulborough Sports And Social Club RH20 2AJ available 24/7 Public
- Pulborough Station RH20 1AH Available 24/7 Public
- Pulborough Medical Centre RH20 1FG Available 24/7 Public
- Tesco RH20 1FG Available Varied Open Times Public
- Sainsburys RH20 1BQ Available 24/7 Public
- Nutbourne RH20 2HE The Rising Sun Pub Open Entrance Available 24/7 (not on map)



Pulborough Parish Council

Swan View, Lower Street, Pulborough, West Sussex RH20 2BF

Telephone: 01798 873532

Email: Reception@pulboroughparishcouncil.gov.uk

www.pulboroughparishcouncil.gov.uk

for Pulborough's future

MAP FLOOD AREA SHOWN IN GREEN.



Example photographs.

West of the A29 Swan Corner

A29 into Pulborough



East of Swan Corner

Swan Corner A29

