

# Pulborough Parish Council

Swan View, Lower Street, Pulborough, West Sussex RH20 2BF

Telephone: 01798 873532

Email: Reception@pulboroughparishcouncil.gov.uk

www.pulboroughparishcouncil.gov.uk

*for Pulborough's future*

## **Privacy Notice**

Pulborough Parish Council takes the protection of your data seriously. Our aim is to provide a personalised and valuable service whilst safeguarding our users' privacy. Collecting some personal information is necessary if we are to satisfy the expectations and requirements of our users and we have set out below what we will do with your personal information.

## **Visitors to this web site**

When someone visits this website a third party service is used to collect standard internet log information and details of visitor behaviour patterns. This is actioned to find out things such as the number of visitors to the various parts of the site. This information is only processed in a way which does not identify anyone. If we do want to collect personally identifiable information through our website, we will be up front about this. We will make it clear when we collect personal information and will explain what we intend to do with it.

## **Security and Performance**

We use a third party service to help maintain the security and performance of our website. To deliver this service it processes the IP addresses of visitors to the site.

## **Links to other websites**

This privacy notice does not cover the links within this site linking to other websites. We encourage you to read the privacy statements on the other websites you visit.

## **Use of Cookies**

This site uses cookies to maintain and keep track of users' preferences and authenticated sessions, to identify technical issues, user trends and effectiveness of campaigns, and to monitor and improve the overall performance.

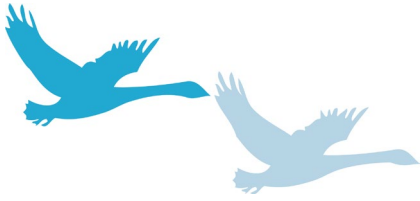
## **Disclosure of personal information**

If contact details are collected via the web site for the purposes of providing a service to existing and potential customers, we will never disclose personal details without the consent of the owner. Details are only held for as long as is necessary to fulfil the service request.

## **Access to personal information**

Individuals can find out if we hold any personal information by making a 'subject access request' under the General Data Protection Regulations. If we do hold information about you we will:

- give you a description of it;
- tell you why we are holding it;
- tell you who it could be disclosed to; and



# Pulborough Parish Council

Swan View, Lower Street, Pulborough, West Sussex RH20 2BF

Telephone: 01798 873532

Email: [Reception@pulboroughparishcouncil.gov.uk](mailto:Reception@pulboroughparishcouncil.gov.uk)

[www.pulboroughparishcouncil.gov.uk](http://www.pulboroughparishcouncil.gov.uk)

---

*for Pulborough's future*

- let you have a copy of the information in an intelligible form.

Please make any such request in writing via our email address: [clerk@pulboroughparishcouncil.gov.uk](mailto:clerk@pulboroughparishcouncil.gov.uk) or by post to Pulborough Parish Council, Swan View, Lower St, Pulborough, RH20 2BF

If at any time you feel that we have failed to meet these standards then please either contact us or make a complaint direct to the Information Commissioner using their website [www.ico.org.uk/concerns](http://www.ico.org.uk/concerns)