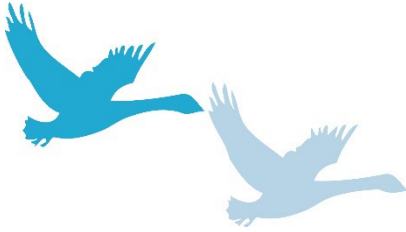


PULBOROUGH PARISH COUNCIL

Working together for a better future



PULBOROUGH PARISH COUNCIL
Swan View, Lower Street
Pulborough
West Sussex RH20 2BF
Telephone: 01798 873532

Email: reception@pulboroughparishcouncil.gov.uk

MINUTES OF THE PLANNING AND SERVICES COMMITTEE MEETING HELD ON 18th JULY 2024 AT THE VILLAGE HALL

PRESENT: Cllrs Esdaile (Chair for this meeting) and Cllr Curd.

IN ATTENDANCE: Mrs B Nobbs (Deputy Clerk)

The meeting was declared non-quorate by the Chair due to lack of attendees, therefore the Clerk declared that delegated decisions be made with the Vice Chair.

.....Chair

.....Date

Delegated Decision made by the Vice Chair of Planning & Services and the Clerk of the Parish.

PLANNING APPLICATIONS

The Committee will consider the following planning applications:

DC/24/0944 – Alderbury, Church Hill, Pulborough, West Sussex

Erection of 2No. holiday homes within the residential boundary

PPC Comments:

The Parish Council believes this is gross over development of a beautiful property. The design is not in keeping with the area.

The access on the A29 is unsuitable for the increase in traffic, the visibility splay is not enough for entering and exiting this main road. There is no suitable pedestrian access to the property.

The Parish Council is concerned over the disruption to the nearby listed buildings and whether this development will impact the conservation of our historic parish.

The Parish Council also has major concerns over the water neutrality statement and the lack of accuracy of the usage used by holiday guests.

DC/24/1000 – Architectural Plants Limited, Stane Street, North Heath, West Sussex

Erection of a ground mounted Solar PV System.

PPC Comments:

The Parish Council would fully support this application.