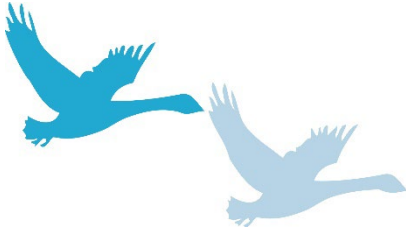


PULBOROUGH PARISH COUNCIL

Working together for a better future



PULBOROUGH PARISH COUNCIL
Swan View, Lower Street
Pulborough
West Sussex RH20 2BF
Telephone: 01798 873532
Email: reception@pulboroughparishcouncil.gov.uk

MINUTES OF THE PLANNING AND SERVICES COMMITTEE MEETING HELD IN THE COMMITTEE ROOM AT PULBOROUGH SPORTS PAVILION ON THURSDAY 4th July 2024

PRESENT: Cllrs Esdaile (Vice Chair), Hunt, Marcusson and Martin.

IN ATTENDANCE: Mr H Quenault (Clerk & RFO)

The meeting opened at 19:34 pm

12. APOLOGIES FOR ABSENCE

Apologies for absence were received and reason approved from Cllr Trembling (Personal Commitment), Cllr Curd (Personal Commitment) & Cllr Riddle (Personal Commitment).

13. DECLARATIONS OF INTEREST AND CHANGES TO REGISTER OF INTERESTS

There were no declarations of interest made.

14. ADJOURNMENT FOR PUBLIC SPEAKING

There were no public speakers.

15. MINUTES

The Committee **RESOLVED** to agree and approve the Minutes of the Meeting held on 2nd May 2024, 6th June 2024 and 20th June 2024 as a true and accurate record of the proceedings and the Chair signed them at the end of the meeting.

16. PLANNING APPLICATION

The Committee considered the planning applications, attached to these Minutes as Appendix 1 and **RESOLVED** that its representations be forwarded to Horsham District Council.

17. PLANNING APPLICATIONS DECISIONS

The Committee **NOTED** the planning application decisions and compliance issues. The Clerk answered questions regarding due process and how a judicial review works.

18. PAYMENTS

Vote of success on the Pultopia.

Kompan Limited	£360.00
Beverley Seal	£300.00
Viking	£122.92
Lakers Builders Merchants	£32.28
Russell Asphar	£250.00
Charlotte Hamilton	£400.00

The meeting closed at 19:56 pm

.....Chair

.....Date

**Recommendations of the Planning & Services Committee meeting held on
4th July 2024**

PLANNING APPLICATIONS

The Committee will consider the following planning applications:

DC/24/0623 - Coombelands Equestrian Stane Street Codmore Hill West Sussex

Replace warm up area with the erection of a show jumping arena, viewing gallery and provision of grass summer parking area.

PPC Comments:

While the Parish Council, is supportive of this application and looks to support our local businesses and potential tourism we do have a concern over the documentation. The transport statement does not have accurate drawings of the current site and is showing incorrect data comparable to how the site is currently being used. If this document is updated, the Parish Council would look to support this application.

DC/24/0883 – Nash Manor, Lower Nash, Nutbourne Lane, Pulborough West Sussex

Installation of Swimming Pool and associated plant room (Part Retrospective)

PPC Comments:

Although we see no design issues with this application and would support it, the Parish Council typically does not favour retrospective planning permission. However, due to the applicant seeking initial planning advice and unique situation this application has, we have no issue with this.